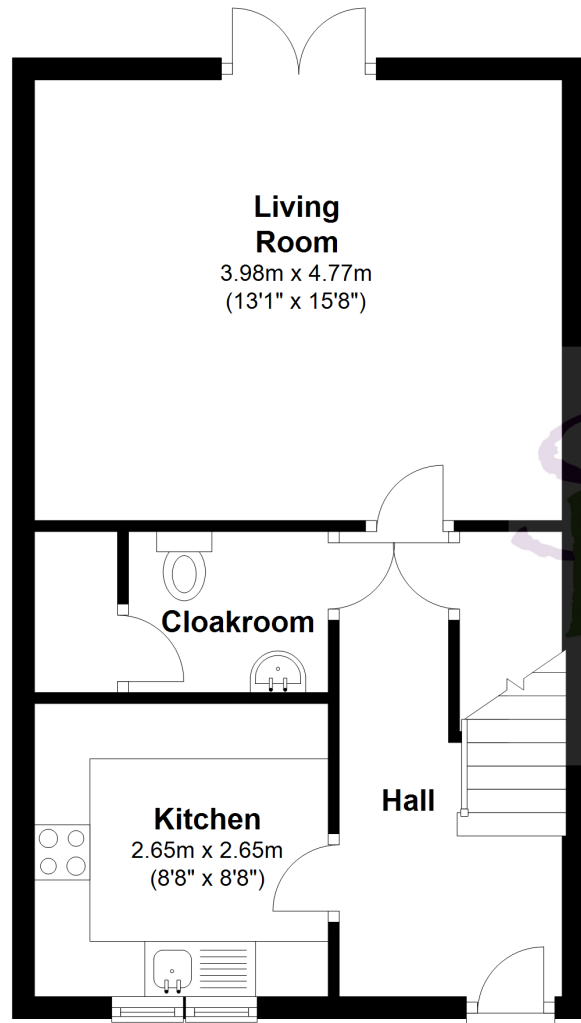


## Ground Floor

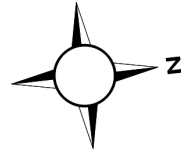


**Living Room**  
3.98m x 4.77m  
(13'1" x 15'8")

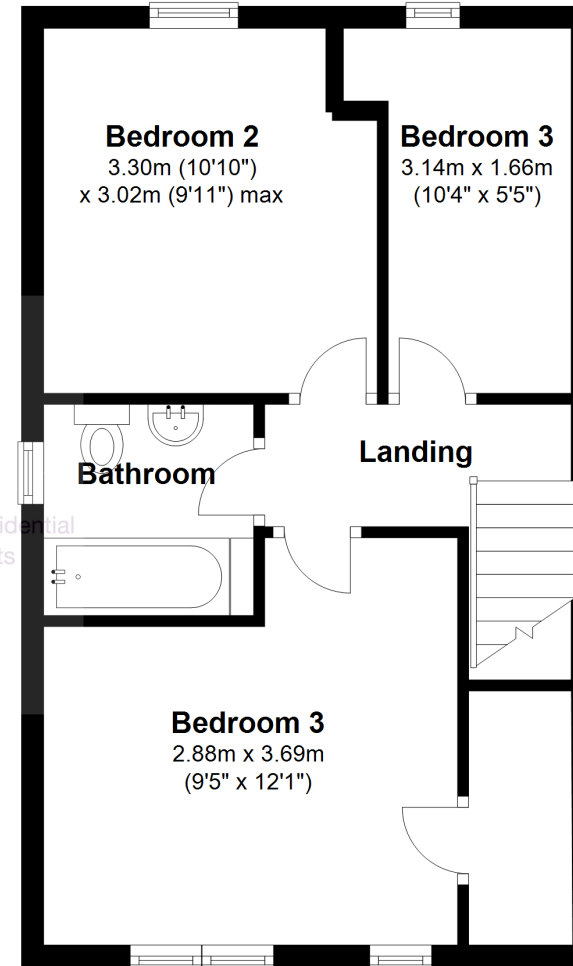
**Cloakroom**

**Kitchen**  
2.65m x 2.65m  
(8'8" x 8'8")

**Hall**



## First Floor



**Bedroom 2**  
3.30m (10'10")  
x 3.02m (9'11") max

**Bedroom 3**  
3.14m x 1.66m  
(10'4" x 5'5")

**Bathroom**

**Landing**

**Bedroom 3**  
2.88m x 3.69m  
(9'5" x 12'1")

While every care has been taken to ensure the accuracy of this floor plan, it should be noted that measurements, where shown, are approximate and no responsibility is taken for any error. This plan is intended to be for indicative/illustrative purposes only and measurements must not be relied upon.

Plan produced using PlanUp.

**10 Dunrobin Grove, Inverness**